

# NAU TEX



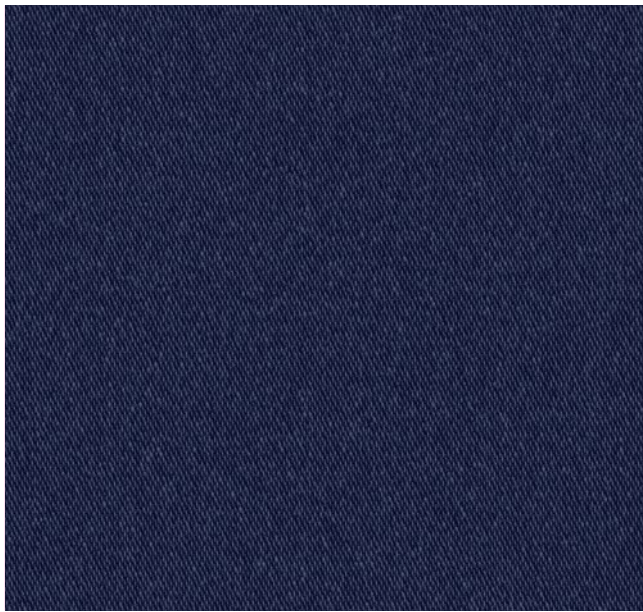
## YACHTMASTER 354

PROTECTS VALUES



[www.sattler-nautex.com](http://www.sattler-nautex.com)

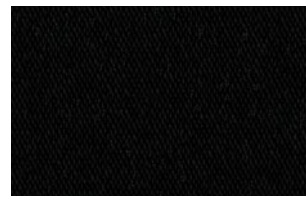
**SATTLER**   
thinking highTEX



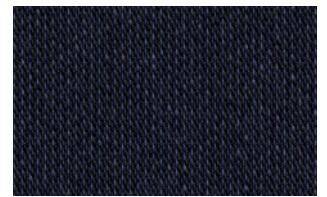
**354 587**  
CAPTAINS NAVY



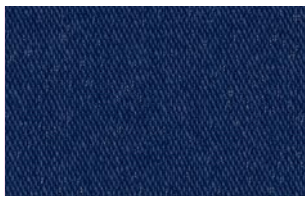
## SPECIAL FEATURES



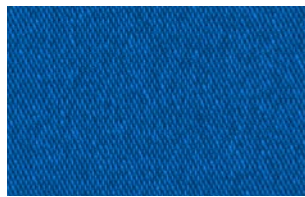
**354 154**  
BLACK



**354 599**  
DARK NIGHT



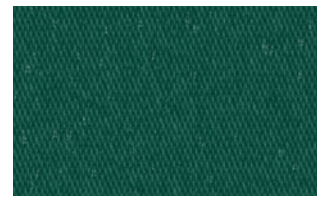
**354 414**  
ROYAL NAVY



**354 563**  
PACIFIC BLUE



**354 517**  
CARIBBEAN BLUE



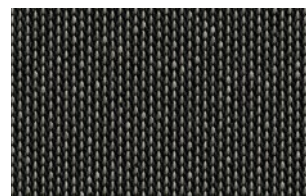
**354 362**  
FOREST GREEN



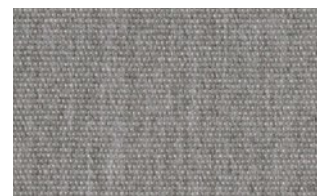
**354 763**  
BURGUNDY



**354 398**  
STORM GREY



**354 979**  
ECLIPSE



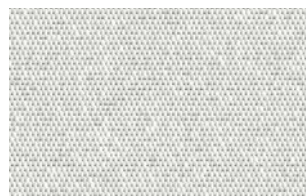
**354 804**  
NIMBUS



**354 805**  
CADET GREY



**354 082**  
STEEL



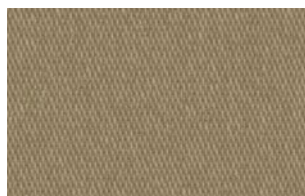
**354 030**  
FOG



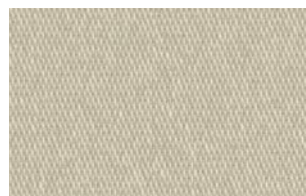
**354 155**  
NATURAL WHITE



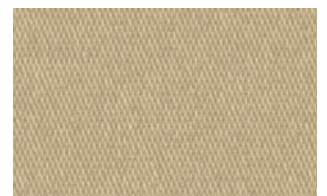
**354 165**  
SAND



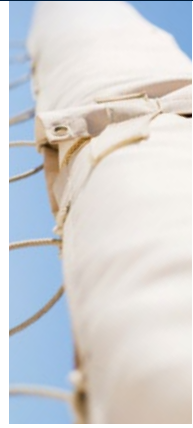
**354 915**  
STONE











**354 765**  
ANTIQUE BEIGE



**354 704**  
LINEN



## TECHNISCHE DATEN / TECHNICAL DATA / DATI TECNICI

	100% Solution dyed Acrylic	DIN 60 001		Einseitig Acrylat / Acrylate on one side / acrilico su un lato	
	340 g/m <sup>2</sup>   10 oz/sqyd	DIN EN 12127		0,63 mm	DIN EN ISO 5084
	Kette / warp / ordito: 170 daN / 5 cm Schuss / weft / trama: 100 daN / 5 cm	DIN EN ISO 13934-1		152 cm   60 inch	
	> 1000 mm	DIN EN ISO 811		60 m   65 yds	

## ANWENDUNGEN / APPLICATIONS / APPLICAZIONI



## REINIGUNG & PFLEGE / CLEAN & CARE / LAVAGGIO & CONSERVAZIONE



**I** Das Gewebe ist beschichtet, es kann zu Farbabweichungen zwischen den Gewebeseiten kommen. / The fabric is coated, there may be colour deviations between the sides. / Il tessuto è rivestito, potrebbero esserci scostamenti di colore tra i lati del tessuto.



Legende /  
Legend /  
Leggenda

Hinweis: Änderungen, die dem technischen Fortschritt dienen, behalten wir uns vor. Werte ohne Toleranzangaben sind Nennwerte mit einer Toleranz von  $\pm 5\%$ . Die Angaben entsprechen unserem heutigen Kenntnisstand und sollen ohne Rechtsverbindlichkeit informieren. Für andere Einsatzzwecke ist die Zustimmung der SUN-TEX GmbH einzuholen. Ohne die Zustimmungserklärung der SUN-TEX GmbH wird für andere als die angegebene Anwendung(en) keine Haftung übernommen. • Note: Subject to change in view of technical upgrades. Values indicated without tolerance levels are nominal values with a tolerance of  $\pm 5\%$ . All data presented here is given to the best of our current knowledge for guidance purposes and is not legally binding. SUN-TEX GmbH must consent to uses other than specified. Without written consent of SUN-TEX GmbH for usages other than the here specified no liability will be granted. • Note: Sous réserve de modifications techniques. Les données indiquées sans tolérance s'entendent comme valeurs nominales avec une tolérance de  $\pm 5\%$ . Elles correspondent à notre niveau actuel de connaissances techniques et se veulent uniquement informatives, sans aucune portée juridique. En cas d'autres utilisations que celles indiquées, le consentement exprès de SUN-TEX GmbH est à demander, faute de quoi SUN-TEX GmbH n'assumera aucune responsabilité pour toute utilisation non-recommandée. • Avvertenza: Il produttore si riserva di apportare modifiche per il miglioramento tecnico del prodotto. I valori privi di tolleranza sono da intendersi come valore nominale con una tolleranza di  $\pm 5\%$ . Tutti i dati corrispondono allo stato attuale delle nostre conoscenze; le informazioni fornite non sono legalmente vincolanti. Per ulteriori utilizzi è necessaria l'autorizzazione da parte di SUN-TEX GmbH. Senza una dichiarazione di autorizzazione emessa da SUN-TEX GmbH non rispondiamo di nessun utilizzo che diverga da quelli indicati.